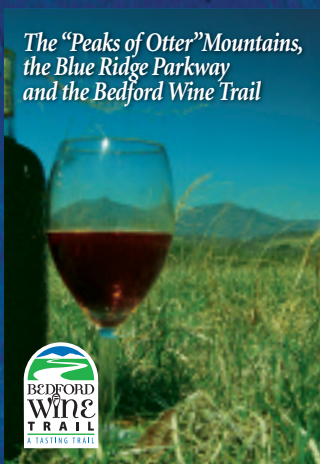




The National D-Day Memorial



Thomas Jefferson's
Poplar Forest



The "Peaks of Otter" Mountains,
the Blue Ridge Parkway
and the Bedford Wine Trail



Smith Mountain Lake

*Rich Pleasures
Historic Treasures*

www.VisitBedford.com or Call Toll-Free 1-877-447-3257

*Come experience a valley nestled
among Virginia's beautiful
Blue Ridge Mountains.*

A land where majestic mountain peaks stoop to drink from the reflective waters of a vast highland lake and circling hawks patrol ancient forests as they've done since the beginning of time. This is Bedford. Ruggedly beautiful. Enticingly exciting, and teeming with history.

The National D-Day Memorial stands silent watching over the area that gave more of its sons on the beach at Normandy than any other place in the country.

It's a haven of solitude where Thomas Jefferson chose to build the private retreat he used to find inspiration.

And it's a place that offers unlimited appeal to visitors of all ages and interests. From arts, antiquing, and family attractions, to mountain biking, backpacking, and dinner cruises on a mountain lake, Bedford truly has something for everyone.



Bedford Area Welcome Center

816 Burks Hill Road • Bedford, Virginia 24523
www.VisitBedford.com TOLL FREE 1-877-447-3257

© 2008 Bedford Welcome Center • Design by Axis Creative Network

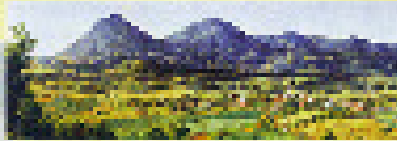
brought to you by  vacationfun.com

Historic Sites



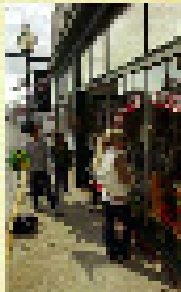
Historic Bedford Area

As you stroll through the streets of Centertown Bedford you are immediately awed by a sense of kinship with those early European settlers who, in 1782, set down roots here in the shadows of the ancient Peaks of Otter and established the little community that became the town of Liberty in 1839.



The town initially grew and prospered as a center for the production and distribution of tobacco, corn, wool, textiles, and synthetic rubber products. But as successful as the town was in these areas, it was equal-

ly successful in luring tourists with its beauty and natural resources. In fact, Thomas Jefferson was so enamored with the area that he built his family retreat amidst poplar trees in the Forest area of Bedford County. For decades the town continued its economic climb and in 1892, Liberty became Bedford City. In 1912 the name was changed to simply Bedford and in 1984 it was officially listed in the National Register of Historic Places. Today visitors to the Centertown historic district can still see a collection of 240 buildings that for a brief moment seem to bring the spirit of the past back to life.



From a historical perspective, it is enough that Bedford was one of the early settlements in America. But the World War II invasion on the beaches of Normandy, guaranteed it a place of significance in every history book that would be written after June 6, 1944.

Of the 35 young men from the small community who stormed the beaches that day, 19 never returned, giving Bedford the distinction of losing more of its sons per capita than any other place in the country.

Today, the modern city still retains the aristocratic charm that comes from over 200 years of this proud tradition. It's a charm that makes visitors come back again and again, so that for just a moment they can reach out

and touch a bit of the past and perhaps get a glimpse of the future. In 1985 Bedford was selected as one of the first main street communities in Virginia. For more information call 540-586-2148. www.centertownbedford.com



Thomas Jefferson's Poplar Forest

This historic house and beautiful plantation was President Thomas Jefferson's personal retreat. It was a place where he could escape with his family and find what he called the "solitude of a hermit". Today visitors can explore the octagonal house and experience the private side of this great man. Poplar Forest is open from 10:00 AM until 4:00 PM daily except Tuesdays and Thanksgiving, April through November. 434-525-1806 www.poplarforest.org

*"In point of soil, climate...
and good neighborhood
I think it the finest part of Virginia."*

Thomas Jefferson





Soldiers preparing for landing in Normandy

National D-Day Memorial

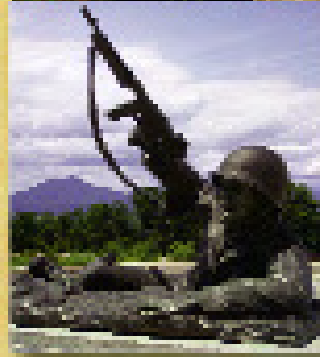
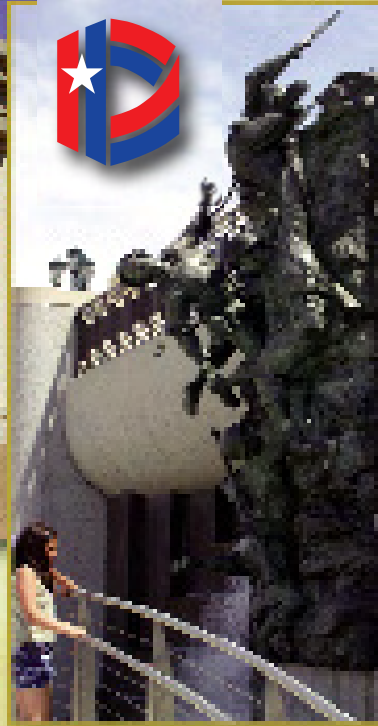
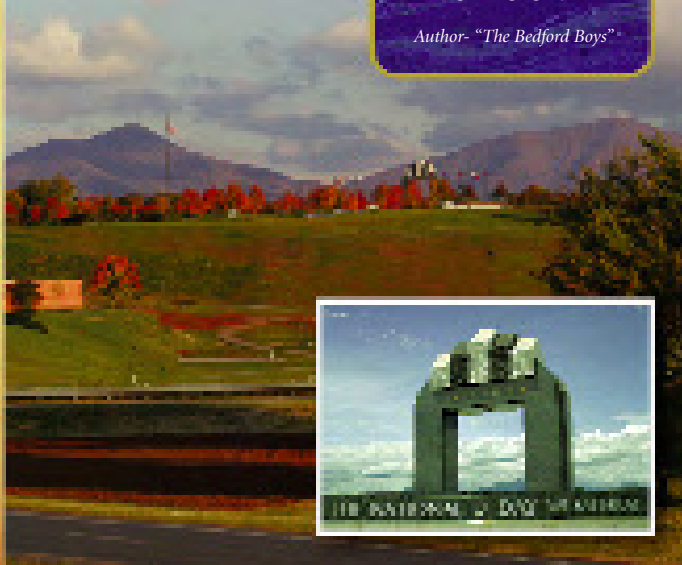
Without question, this is one of the most awe-inspiring memorials ever created. A centerpiece of this 88 acre site is the massive Overlord arch rising 44'6".



"Bedford represents all that is great and gracious about America."

Alex Kershaw

Author- "The Bedford Boys"



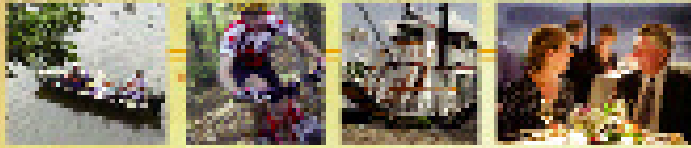
Its massive arch stands high on a hill overlooking the City of Bedford, as if watching over the community that on June 6, 1944 that

gave 19 (a total of 22 in the following days) of its sons on the beach at Normandy to preserve freedom for the world's future generations. This sacrifice was more per capita than anywhere else in the nation making Bedford the location that is emblematic of the courage of our brave citizen soldiers. 540-586-3329 or 1-800-351-3329, www.dday.org. Open daily 10-5. During winter months call for possible inclement weather closure.

GROUP TOUR INFORMATION

Bedford welcomes tours and will handle all the arrangements for your group's visit to the Central Southwest Virginia area. For a tour to remember, contact the Bedford Area Welcome Center at 540-587-5681 or (toll free) 1-877-447-3257. Plan your tour online @ www.visitbedford.com

Recreation & Entertainment



The beauty of Bedford and its vast natural resources offer visitors a wide range of recreational and entertainment opportunities. From extreme sports to family fun to relaxing days in the solitude of nature, there's something for any age and every taste. So plan on staying a while, because you're going to like it here!

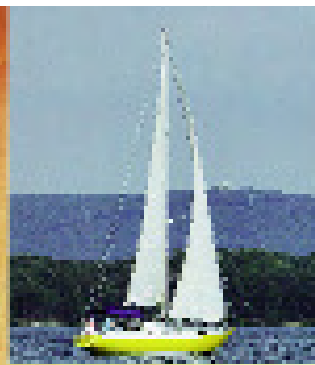
Peaks of Otter

Rising out of the Blue Ridge Mountains, three prominent peaks stand out against the sky giving Bedford one of the most beautiful backdrops in Virginia. These "Peaks of Otter" known as Sharp Top, Flat Top, and Harkening Hill were home to Native Americans as early as 10,000 B.C. In Bedford's early history, they were a major destination, attracting visitors to the area as they do today. Even Robert E. Lee stopped by to ride his horse Traveler, up Sharp Top while on a visit to the Avenel Plantation. The Peaks offer hiking trails, interpretive programs, group or individual picnic areas, fishing, campgrounds, and a beautiful lodge and restaurant facility that is open year-round. Visitors can hike or take the guided bus tour to the peak of Sharp Top for spectacular 360 degree views or hike to the restored Johnson Farm and experience southern mountain life during the 19th century. On the web at www.peaksofotter.com. The



Peaks of Otter Lodge can be reached at 1-800-542-5927 or 540-586-1081. Call the Peaks Visitor Center at 540-586-4496. For general information call (toll free) 1-877-447-3257 - Also visit: www.BedfordWineTrail.com

Don Hall Photography



Smith Mountain Lake

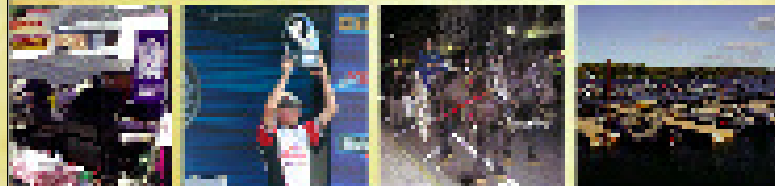
Nestled in the protective embrace of the mountains, this picturesque lake offers over 20,000 acres of playground for boaters, fishermen, swimmers, skiers and water enthusiasts of all ages. The rolling shores are a haven for wildlife and are home to hiking and horseback riding trails, tennis courts and some of the most beautiful golf courses in Virginia. 540-721-1203 or 1-800-676-8203



Smith Mountain Lake State Park

Beginning at the shores of Smith Mountain Lake, the Park boasts a variety of outdoor recreational activities that range from hiking and camping to swimming and boating. Paddleboats, canoes, kayaks and jet skis are available for rental and park rangers and interpreters offer several entertaining programs. The state park also has 18 cabins for rent. 1-800-933-PARK or 540-297-6066

Festivals & Events



Whether you enjoy the arts, history, sports, great music, or just a fun day for the whole family, you'll find it here. So give us a call. For complete information on our events and activities contact the Bedford Welcome Center – 540-587-5681 or (toll free) 1-877-447-3257. A complete events calendar is online at www.visitbedford.com.